

# Let your storage talk: Proactive, efficient and forward-looking

**One software. Unlimited possibilities.** Whether you need the widest possible range of parts, high production speed, or minimum space requirements: Our range of storage systems – from single-axis feeders to panel storage, second level storage, double level storage and storage with two bridges – combines the strengths of automation with intelligent logistics. This results in noticeable optimization effects in terms of higher reliability, availability, and standardized data integration - all of which we make possible for you through the consistent use of our **woodStore 8 storage management software**.

## Highlights of woodStore 8:

- **NEW! quickTip: The assistant for optimum storage management** (see on the back)
- **NEW! intelliStore AI - Offcuts: Sets new standards in terms of offcut management** (see on the back)
- **Up to 15 integrated processing machines and 20 storage return positions as standard for high flexibility in layout design**
- **Storage return position can be used 100% as a restacking position, which is particularly advantageous for storage systems with few stacking locations**
- **Slow-selling goods function – simple detection and disposal of old panel inventory**

**Funktion**  
**quickTips**

Es stehen 10 neue quickTips an

---

**Information**

- Ein alternatives Restlagerverfahren reduziert die Restteile-Umstapelungen um bis zu 37%
- Innerhalb 24 Materialcode(s) gibt es unterschiedliche Dekoreigenschaften
- gleiche Lagerplatz-Gruppen haben gedrehte und ungedrehte Lagerplätze
- Produktionslisten enthalten alle Aufträge
- woodStoreMobile nicht aktiv
- 378 Plattencodes haben keinen Lagerbestand
- Mailbenachrichtigung nicht aktiv
- 2 Plattencodes haben den selben Materialcode aber unterschiedliche Dicken
- 7 Plattencodes haben ein Gewicht von 0
- 5 Plattencodes haben in den Lagen einen Gewichtsunterschied > 20.00%

### New: quickTip

#### The assistant for optimum storage management

quickTip is a new assistance function integrated into HOMAG storage management systems for maximum quality, ease of use and performance. It proactively supports the machine operator with recommendations - so that the full storage potential can be utilized at all times.

**The advantage:** All quickTips are listed centrally in woodStore - this makes work easier, improves stock management and enables simple panel handling.

- **More intelligent than ever:** Proactive setting recommendations from the storage management system helps the machine operator to make use of the full storage potential
- **Machine operator and storage system work hand in hand:** simple panel handling and optimum storage management

#### Our top 3 quickTips for you:

- **Outdated panels in the storage:** Protect your inventory from old panel stocks and unnecessary restacking
- **Outfeeding to processing machines is not the top priority:** Utilize the existing production capacities of your processing machines
- **Storage groups with rotated and unrotated locations:** Avoid unnecessary additional movements of the traverse during restacking



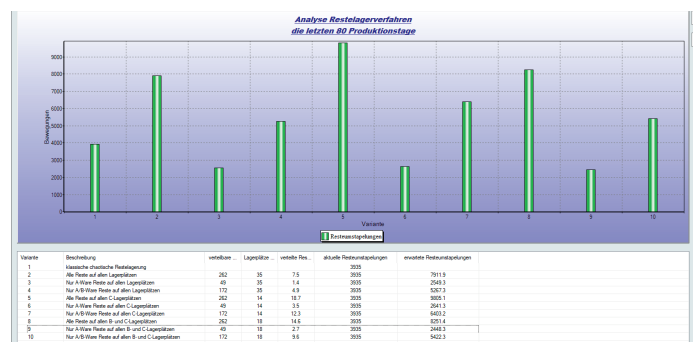
### New: intelliStore AI - Offcuts

#### Sets new standards in terms of offcut management

intelliStore AI - Offcuts enables the automatic storage of offcuts on defined stacks of panels distributed in panel storage - depending on the variety of panels and parts portfolio, you can reduce your stock movements by up to 40% and optimize your space utilization.

#### Individually tailored to your production:

In addition to storing offcuts on panel stacks, automatic offcuts can also continue to be stored in classic offcut storage locations. A combination of both methods is also possible - woodStore Analyzer continuously evaluates your storage data and shows which method is most efficient for you.



Analysis result from woodStore Analyzer

#### Further highlights:

- Even more storage efficiency thanks to the simple categorization of your offcuts and panel stacks into ABC offcuts and ABC panel stacks - so your storage always makes the best data-based decisions for you
- Significant reduction in restacking and storage movements in relation to offcuts. This gives you more flexibility and performance and optimizes your space utilization and energy requirements

**One software.**  
Unlimited possibilities.